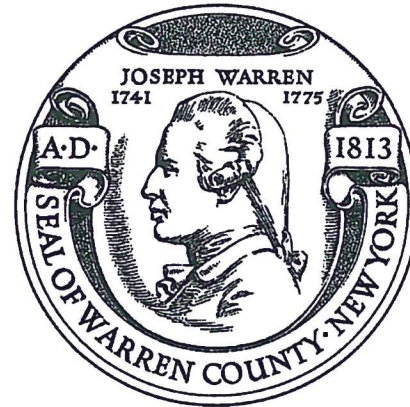


Collaborating



LAKEGEORGEAREA
IN NEW YORK'S ADIRONDACKS
VisitLakeGeorge.com

BOS Economic Growth Committee
September 30th, 2019

Glens Falls MSA #7 - Cities with Most Women Owned Businesses



Small & midsize metros with the most female business owners

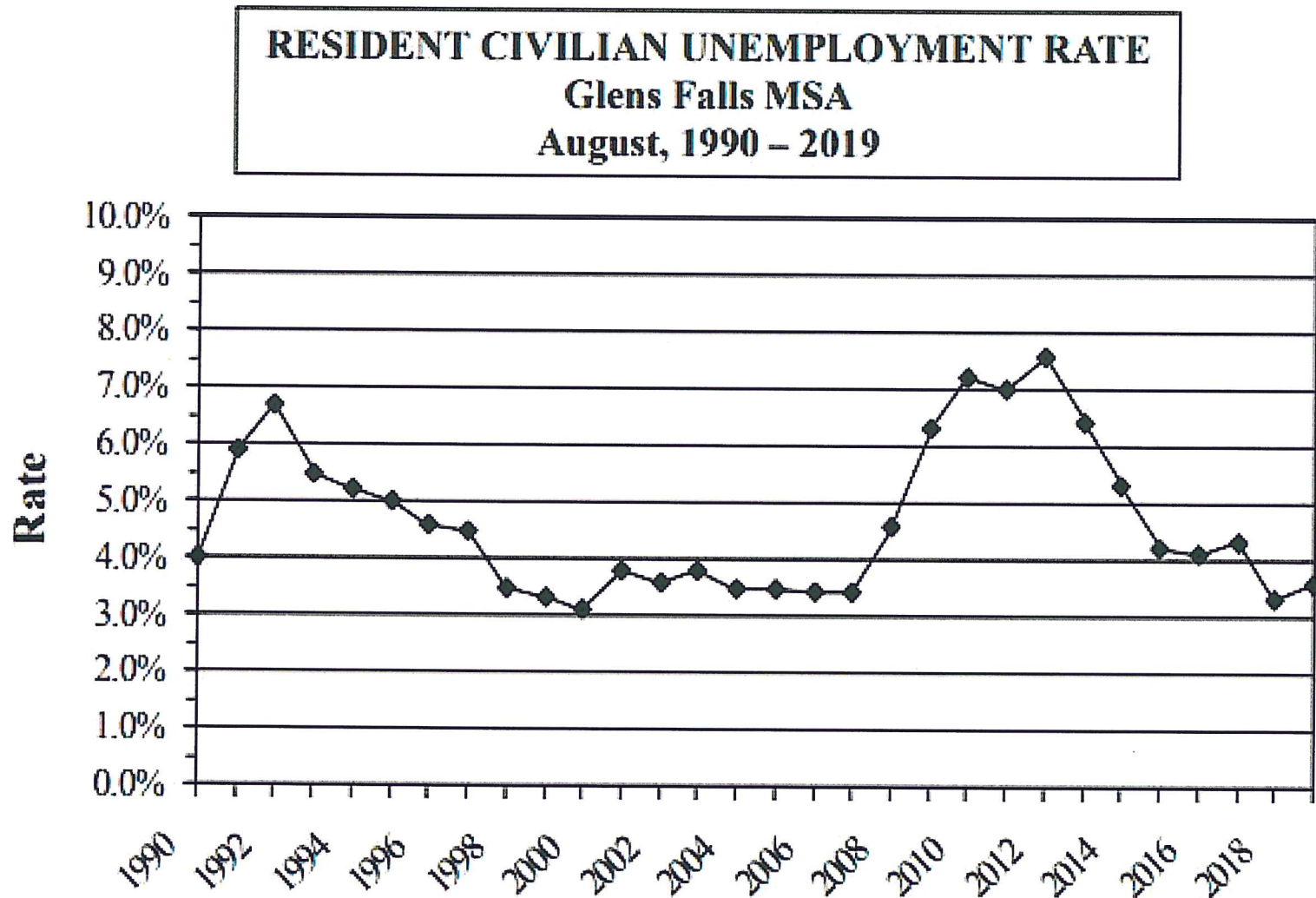
MIDSIZE METROS	PERCENTAGE	SMALL METROS	PERCENTAGE
1. Fayetteville, NC	46.9%	1. El Centro, CA	63.2%
2. Beaumont-Port Arthur, TX	41.3%	2. Morristown, TN	57.5%
3. Urban Honolulu, HI	39.6%	3. Warner Robins, GA	55.0%
4. El Paso, TX	39.2%	4. Santa Cruz-Watsonville, CA	53.5%
4. Durham-Chapel Hill, NC	39.2%	5. The Villages, FL	52.5%
6. Santa Rosa, CA	38.9%	6. Chico, CA	49.9%
7. Savannah, GA	38.8%	7. Glens Falls, NY	49.1%
8. Gulfport-Biloxi-Pascagoula, MS	38.7%	8. Hammond, LA	48.1%
9. Manchester-Nashua, NH	38.6%	9. Farmington, NM	46.9%
10. Eugene, OR	38.3%	10. Sierra Vista-Douglas, AZ	46.5%



Source: Volusion analysis of U.S. Census Bureau 2017 American Community Survey 1-Year Estimates

NYS DOL Monthly Jobs Report

August 1990 to 2019 Historical



NYS DOL Monthly Jobs Report August 2018-2019 Comparision

Local Area Unemployment Rates* (%)
August 2018 and August 2019
(not seasonally adjusted)

	August 2019*	August 2018
Metro Areas	4.2	4.0
Albany-Schenectady-Troy	3.8	3.5
Binghamton	4.5	4.3
Buffalo-Niagara Falls	4.4	4.2
Dutchess-Putnam	3.8	3.5
Elmira	4.3	4.3
Glens Falls	3.6	3.3
Ithaca	3.9	3.6
Kingston	3.9	3.8
Nassau-Suffolk	3.9	3.7
New York City	4.3	4.3
Orange-Rockland-Westchester	4.1	3.8
Rochester	4.3	4.0
Syracuse	4.2	3.8
Utica-Rome	4.3	3.9
Watertown-Fort Drum	5.0	4.4
Non-metro counties	4.2	4.0

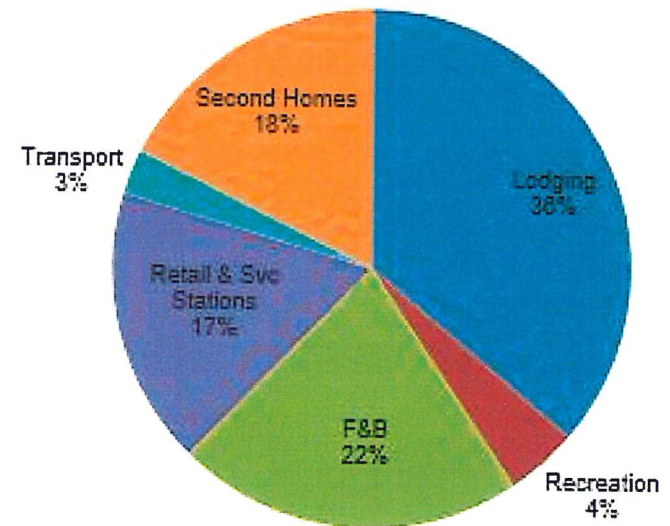
*Data are preliminary and subject to change.



NYS ESD Tourism Economics Report Update - 2018

- Travelers spent \$1.5 billion in the Adirondacks in 2018 across a diverse range of sectors.
- Spending on lodging and food & beverages comprised 36% and 22% of the total, respectively.
- Seasonal second homes also generate significant economic activity in the region, tallying \$258 million.

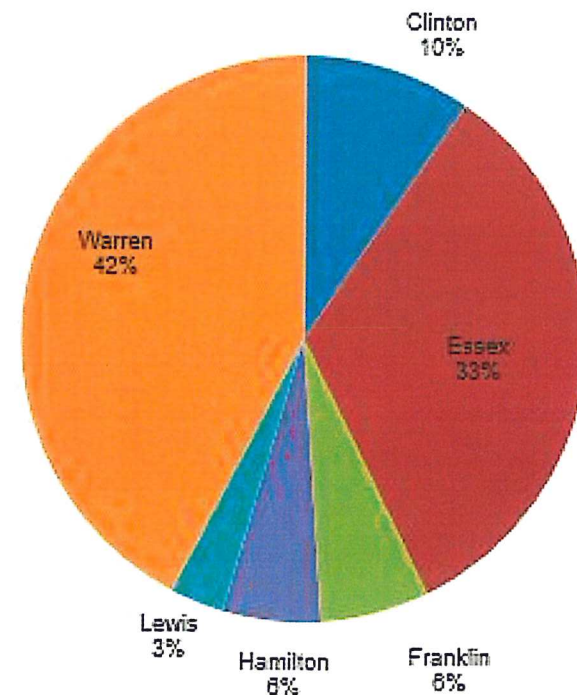
Traveler Spending



NYS ESD Tourism Economics Report Update - 2018

- Tourism in the Adirondacks region is a \$1.5 billion industry, supporting 21,089 jobs.
- Warren County represents 42% of the region's tourism sales, with \$629 million in direct tourism spending.
- Direct traveler spending in the region increased 4.8% in 2018.

Traveler Spending



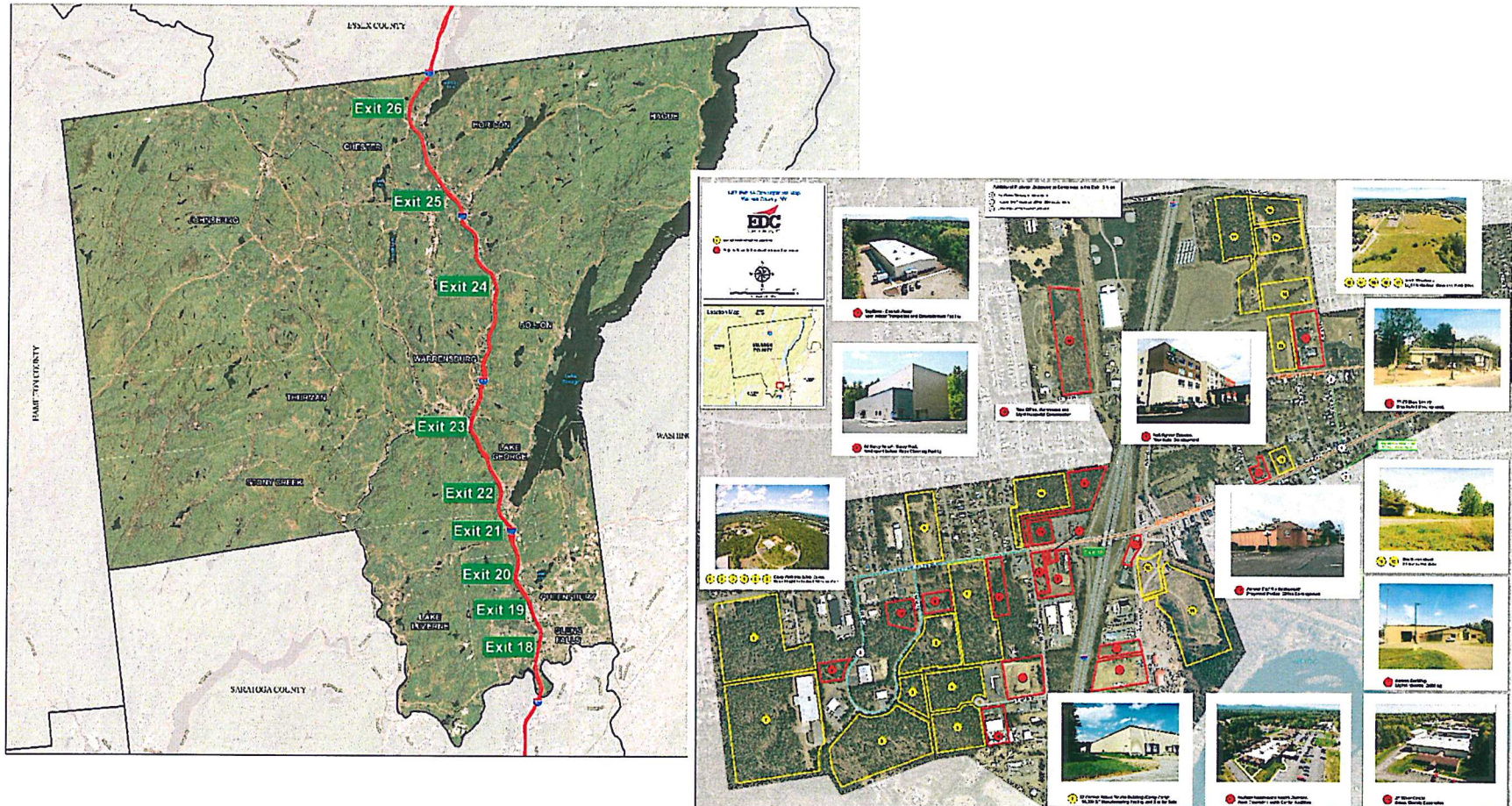
Demolition (D Sites) to Begin Sept on South Street Preparing for “The Market”



Webgraphics Building on Corinth Road, Queensbury off I-87



EDC Northway Exits Site ID Project Now Focused on Chester, Horicon



Recent Accomplishments and Initiatives

- CFA Round 9 Advisory, Assistance, Advocacy – Assisted 12 CFA Applications for Round 9
- Lake George Sewer Advocacy, EDC Spoke at Legislative Hearing in Albany, Coordinated Senator Schumer Visit
- Oversee Glens Falls DRI – Projects: SUNY Culinary, Demolition/Pre-Construction of “The Market” on South Street

Additional EDC Warren County Projects Completed 2019 - 2020

- Upgrades for EDC website, corroborative social media, data upgrades and work toward ADA compliance with website \$20,000
- Technology improvements to server, software \$15,000
- Strategic Plan Revised/ Updated \$15,000
- Pathway Corridor Report Phase 1 - \$100,000 with contributions from EDC \$25,000 County \$25,000 and National Grid \$50,00
- Queensbury Business Park Feasibility/Technical Review \$30,000
- Exits study \$7,500 (Northway 87 exits 26 to 18)
- Affordable Housing Initial Phase \$20,000 \$10,000 EDC \$10,000 County LDC

EDC Affordable Housing



EDC Coordinated Visit in April to Lake George with Senator Schumer

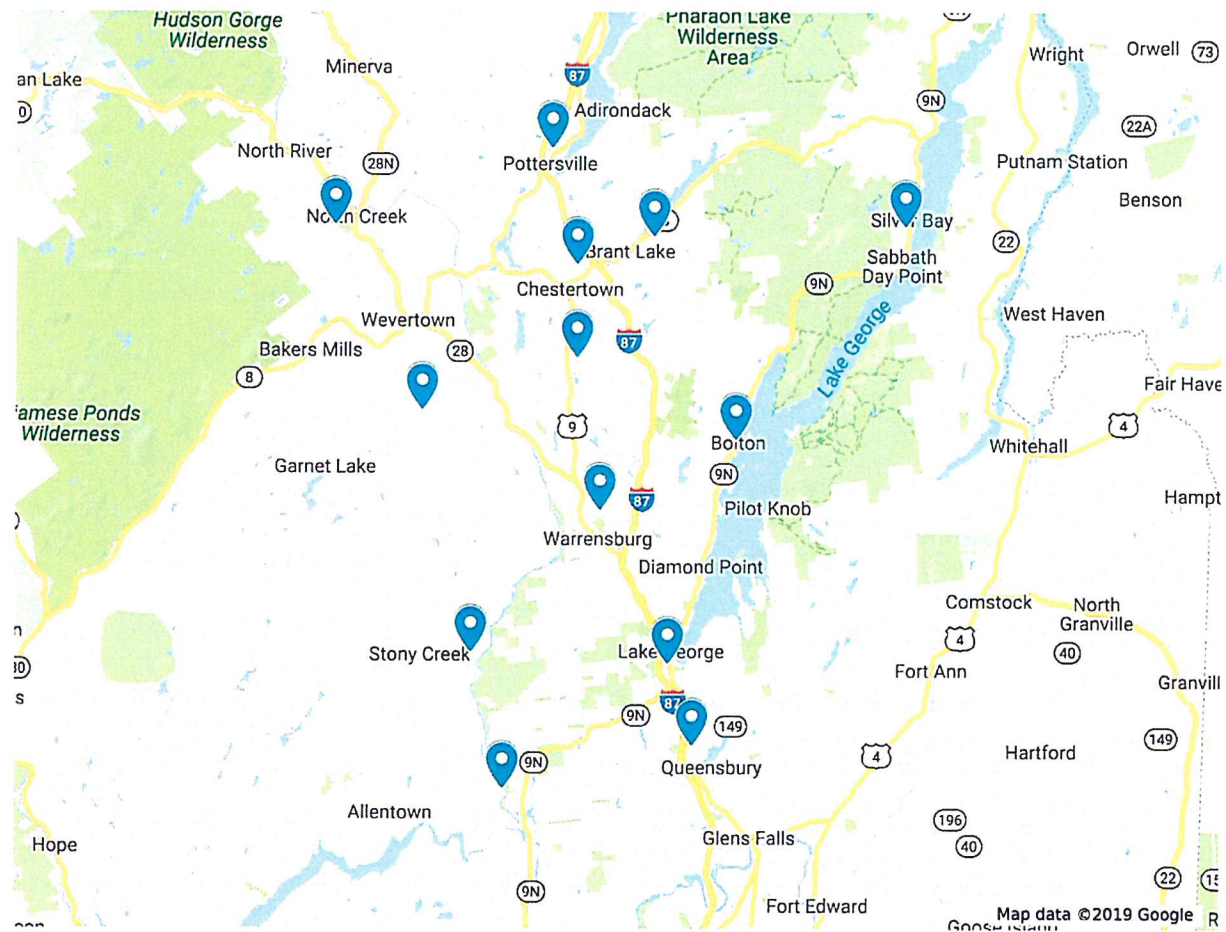


Next: ESD Tour of Northern Warren County Sites & Key Assets

Proposed North Warren County Tour Sites

Proposed North Warren Sites

- LG Wastewater Plant
- Lake Luzerne
- Stony Creek Ranch Resort
- Warrensburg
- Chester Ind Park
- Nettle Meadow/Thurman
- Gore Mountain/North Creek
- Pottersville/Chester
- Exit 25 Site/Chester
- Brant Lake/Horicon
- Silver Bay Conf Center/Hague
- Bolton Landing
- LG Outlets/Exit 20

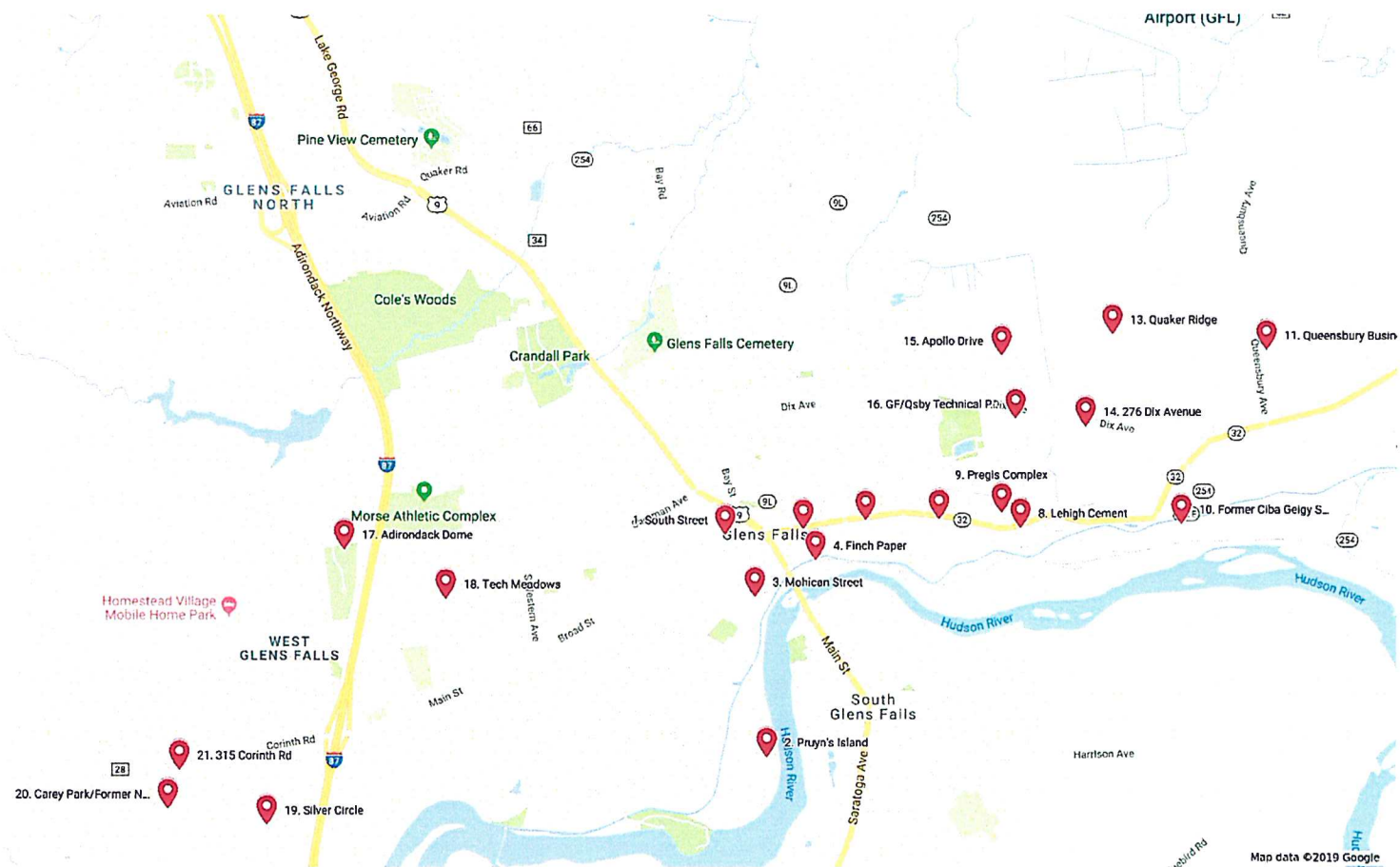


EDC Hosted ESD Familiarization Tour of Key Glens Falls/Qsby Sites Spring 2019

Tour of Glens Falls/Queensbury Sites

Untitled layer

1. South Street
2. Pruyn's Island
3. Mohican Street
4. Finch Paper
5. Former GF Post Office
6. Former GF Armory
7. Former Native Textile
8. Lehigh Cement
9. Pregis Complex
10. Former Ciba Geigy Site
11. Queensbury Business Park
12. Warren Washington IDA Park
13. Quaker Ridge
14. 276 Dix Avenue
15. Apollo Drive
16. GF/Qsby Technical Park
17. Adirondack Dome
18. Tech Meadows
19. Silver Circle
20. Carey Park/Former Native Bldg
21. 315 Corinth Rd



EDC Welcomed Lt. Gov Hochul to Warren County March 2019



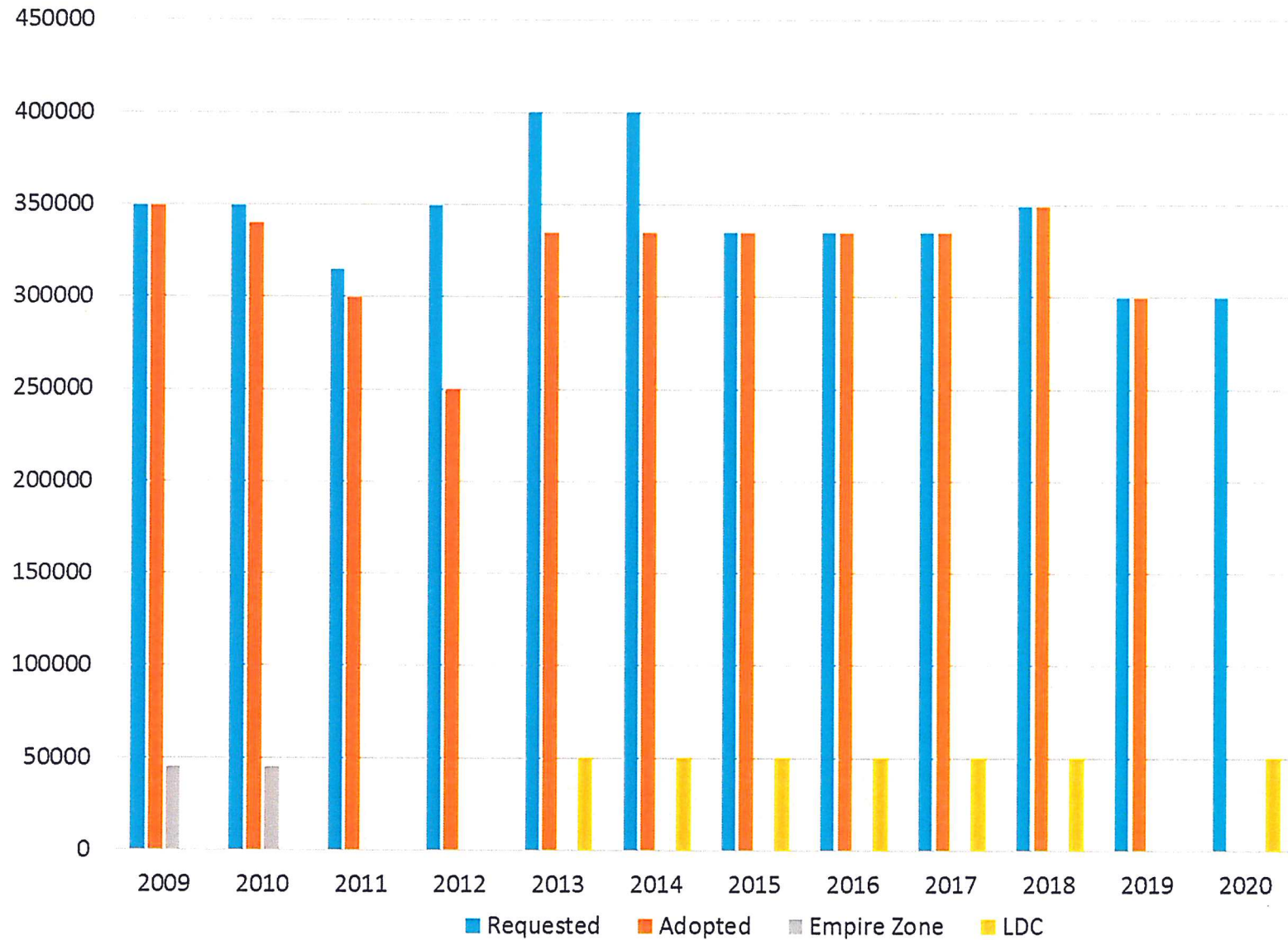
NYS 2019 Budget Restores \$420 Million Film Tax Credit Program



Targeted Objectives for 2019-2020

- Funding for Implementing Recommended Pathway Corridor Plan (Phase 2)
- Recruitment of 1 or more New Light Industrial Spec Building(s)
- Preparation of Additional Sites Suitable for Light Industrial/Manufacturing
- Queensbury Business Park Technical Feasibility Underway
- Identification of Potential Users for Vacated Web Graphics Building – Assist Connecting Displaced Employees with Local Companies
- Launch Hamlet Revitalization Initiative – Follow Up to I87 Exits Project
- Market to and Connect with Potential Qualified Opportunity Zone Investment Groups for Both of Warren County's two OZ's
- Glens Falls DRI Advancement – South Street Market project
- Marketing & Communication Enhancements and Expansions – Web, Social, PR, Blog/Newsletter, Video

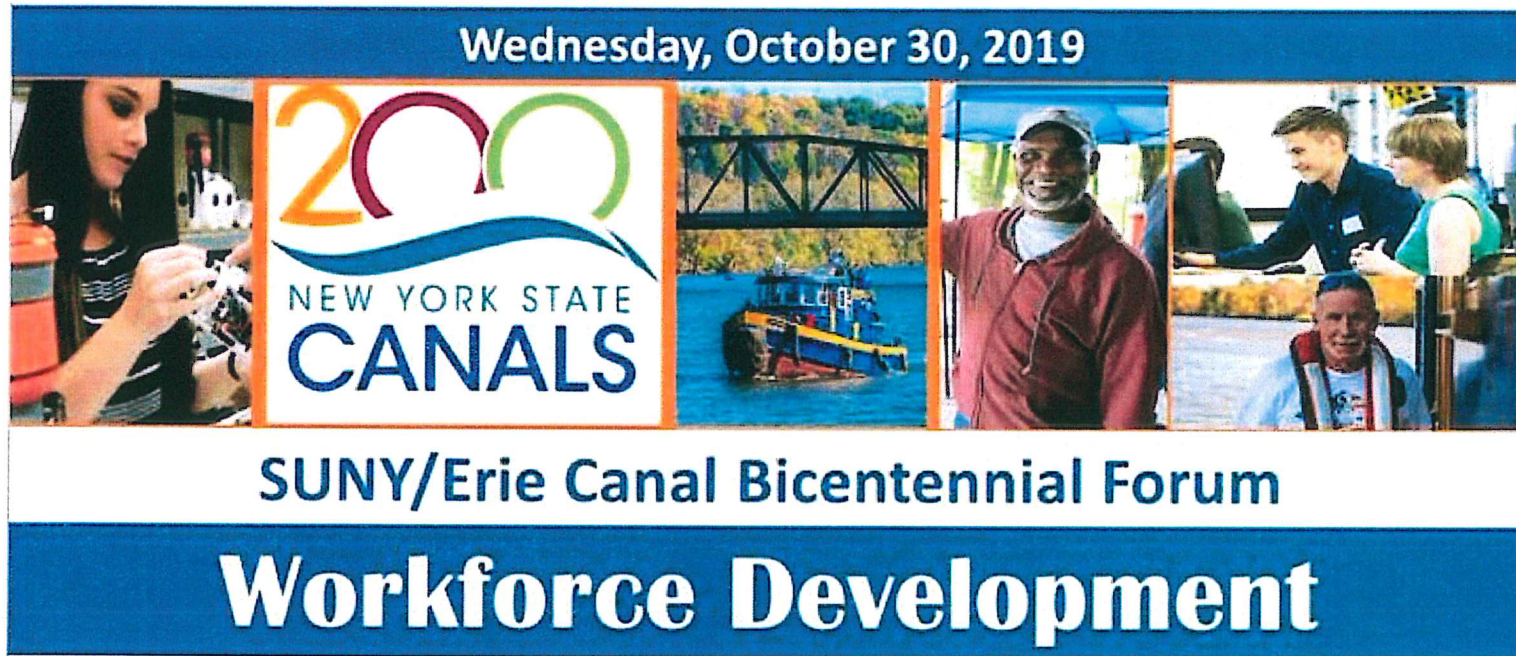
Warren County Funding for EDC



2020 EDC Funding Request to Warren County

- \$300,000 - EDC Warren County
- \$50,000 - LDC

EDC Participating Panelist for SUNY/Erie Canal Bicentennial Forum on Workforce Development on Oct 30th at SUNY Adirondack, Queensbury



EDC Professional Staff

- Ed Bartholomew – President
ebartholomew@edcwc.org
- John Wheatley – Vice President
jwheatley@edcwc.org
- Jennifer Switzer – Director of Finance
jswitzer@edcwc.org

EDC Contact Information

Economic Development Corporation

333 Glen Street

Glens Falls, New York 12801

Tel: 518-761-6007

www.edcwc.org