

Everything else you need to know

- Bill of Rights
 - NYCLU
- Ballot errors
- Items Posted in the Voting Booths

NEW YORK STATE VOTER'S BILL OF RIGHTS

As a registered voter, you have the RIGHT TO:

- ➔ **VOTE:** The right to vote includes voting for candidates and questions on the ballot and having sufficient time to vote.
- ➔ **HAVE YOUR VOTES COUNT:** Vote on a voting system that is in working condition and that will allow votes to be accurately cast.
- ➔ **SECRECY IN VOTING:** Secrecy in voting will be preserved for all elections.
- ➔ **FREEDOM IN VOTING:** Cast your vote, free from coercion or intimidation by elections officers or any other person.
- ➔ **PERMANENT REGISTRATION:** Once registered to vote, you continue to remain qualified to vote from an address within your county or city.
- ➔ **ACCESSIBLE ELECTIONS:** Non-discriminatory equal access to the election system for all voters, including the elderly, disabled, alternative language minorities, military and overseas citizens, as required by federal and state laws.
- ➔ **ASSISTANCE IN VOTING:** You may request assistance to vote because of blindness, disability, or inability to read or write.
- ➔ **INSTRUCTION IN VOTING:** You can view a sample ballot in this polling place prior to voting, and before entering the machine, you may also request help in how to operate the machine.
- ➔ **ABSENTEE VOTING:** If you will be out of your county of residence, or New York City, on election day, or are unable to go to your polling place due to illness or physical disability, you may cast an absentee ballot.
- ➔ **AFFIDAVIT VOTING:** Whenever your name does not appear in the poll ledger, or the registration or enrollment list, or you do not provide identification when required, you will be offered an affidavit ballot.
- ➔ **FIRST TIME VOTER?** Instructions on how to vote are available on the sample ballot posted in this polling place. If you need additional help, prior to signing in, ask the inspectors working here today.

CASTING A VOTE ON PAPER BALLOT? Review your ballot to be sure you have cast your votes as you intended. Be sure to vote for the number of candidates permitted for each office **on your ballot. If you make a mistake on your ballot, return it to the inspectors and you will be given** another.

PROBLEMS? Federal and state laws prohibit acts of fraud and misrepresentation in voting. When you encounter problems voting, contact your county board or the State Board of Elections.

To contact your County Board of Elections:

WARREN COUNTY BOARD OF ELECTIONS Call 518-761-6456-6457-6458-6459 or write to them, at

1340 STATE ROUTE 9
LAKE GEORGE NY 12845

To contact the **NEW YORK STATE BOARD OF ELECTIONS,**

Call 1-518-474-6221 or write to them, at 40 North Street, Albany, NY 12207-2108



Poll Worker Tips: Interacting Respectfully with Transgender & Gender Non-Conforming People

Definitions:

- **Transgender:** Umbrella term for individuals whose understanding of their own gender, behavior and how they present themselves in the world is different from what society expects based on their assigned sex at birth.
- **Gender Non-Conforming (GNC):** Term for individuals who do not follow societal expectations regarding how they "should" present themselves based on their assigned sex at birth.

Respectful Interaction at Poll Station:

1. At the poll, when you are greeting a transgender/GNC person, you may think that their registered name or identification does not "match" their gender presentation. Where all other legal requirements are met, *a transgender/GNC person is entitled to vote and should not be challenged on this basis.*
2. Do not assume that a person is male or female.
3. NEVER use words such as "it" or "whatever" when referring to someone who is transgender/GNC.
4. If you are not sure of someone's gender identity, or if the name given or shown on their identification does not appear to match the person's gender presentation, it is OK to ask if the person has a "preferred" name and/or pronoun.
5. When you are not sure what pronoun to use, stick to the person's first name or use the pronouns "they/them/theirs." (i.e. "This is *John's* ballot." Or "This is *their* ballot.")
6. NEVER ask a transgender/GNC person what their "real name" is.
7. If you make a pronoun mistake, acknowledge the mistake and apologize. Being honest about your unfamiliarity with transgender/GNC people shows respect. It also lets them know that you recognize them as someone exercising their right to vote and will use their preferred pronoun moving forward.
8. Being transgender isn't dependent on any particular medical procedure. It is never appropriate to inquire about surgeries or any other intimate details.
9. When you learn about an individual's transgender/GNC identity, keep it private. It is privileged information. You should never "out" people by revealing their identity to others.
10. Treat people respectfully, validating how they present themselves just as you would everyone else.

Please contact Melanjé Trimble with any questions: (516) 426-8594

Adapted with permission of the ACLU of Indiana, the League of Women Voters, & Freedom Indiana.

BALLOT ERRORS

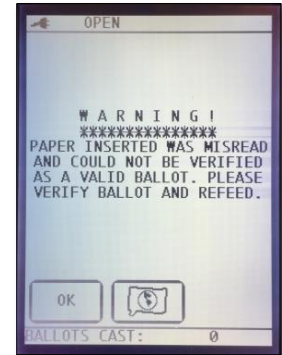
If the voter makes an error completing their ballot the scanner may return it. Here is a description of the most common errors:

- Ballot comes back out (beeping) = Misread or Ambiguous marks
- Keeps Ballot (beeping) = Double Vote
- Keeps Ballot (silent) = Over Vote

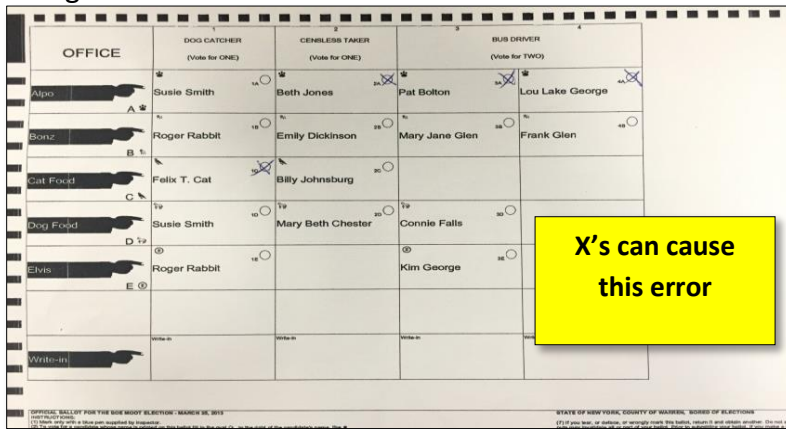
In both of the first two cases the scanner immediately ejects the ballot and the machine will be beeping

1. Paper Misread - This is the most common error. This just means the scanner hasn't recognized the paper as a valid ballot. This has nothing to do with how the ballot is filled out.

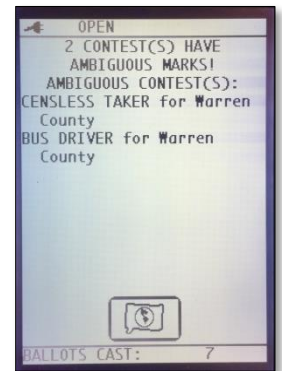
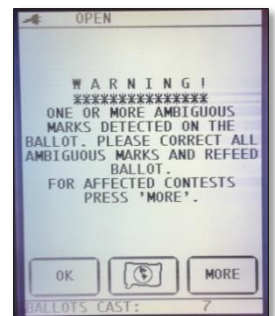
Have the voter turn the ballot over and try again.



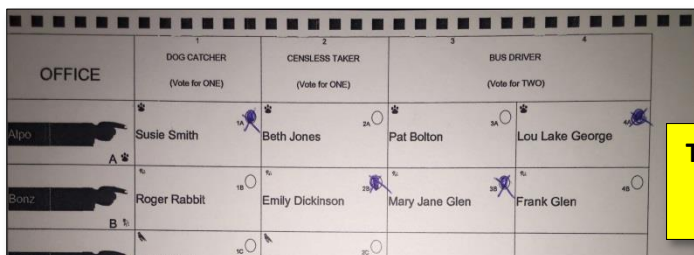
2. Ambiguous Marks Detected – This means the scanner has detected marks outside of the circles. For example, the voter has made check marks instead of filling in the circles.



X's can cause this error



Often this can be fixed by having the voter fill in the circles right over the X's. Otherwise the voter may need a new ballot.



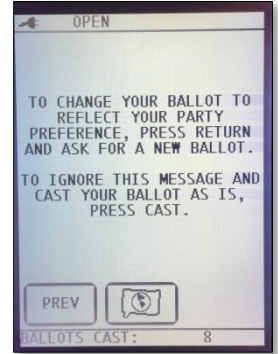
This fix will usually scan

In the next two cases the scanner keeps the ballot and the buttons light up

3. **Double Vote** – This means the voter has selected the same candidate more than once in at least one contest. In our example Susie Smith was selected twice.

OFFICE	1 DOG CATCHER (Vote for ONE)	2 CENSLESS TAKER (Vote for ONE)
Alpo A	Susie Smith	Beth Jones
Bonz B	Roger Rabbit	Emily Dickinson
Cat Food C	Felix T. Cat	Billy Johnsburg
Dog Food D	Susie Smith	Mary Beth Chester
Elvis E	Roger Rabbit	

The Machine will be beeping while waiting for a response from the voter

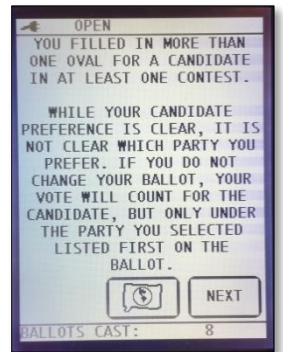


If Susie Smith counts as a vote for



4. **Over Vote** – This means the voter has made too many candidate selections for one or more contests. In our example the Dog Catcher contest is a Vote for ONE and the voter has selected two candidates.

OFFICE	1 DOG CATCHER (Vote for ONE)	2 CENSLESS TAKER (Vote for ONE)
A	Susie Smith	Beth Jones
B	Roger Rabbit	Emily Dickinson
C	Felix T. Cat	Billy Johnsburg
D	Susie Smith	Mary Beth Chester
E	Roger Rabbit	



If the voter selects CAST, the votes for Dog Catcher won't count.



Items Posted In the Voting Booth

PLEASE REVIEW INSTRUCTIONS PRIOR TO MARKING YOUR BALLOT.

Marking Your Ballot

- Mark your ballot by filling in the voting oval next to the candidate's name you are selecting.
- Be sure to completely fill in the oval.
- Use only the pens provided.
- For a write-in vote, locate the "Write-in" box at the bottom of the column for each contest. Write the name of your candidate in the box.
- Check both sides of your ballot. Propositions and proposals may be on the reverse side of your ballot.



- If you cast votes for more candidates than are permitted in any given contest (over-vote), your votes in that contest will not be counted.
- If you make a mistake on your ballot, do not try to correct it. Give your ballot to an inspector and receive a replacement ballot.

Scanning Your Ballot

- When you have finished filling out your paper ballot, place it in the privacy sleeve.
- Proceed to the optical scan voting machine with your privacy sleeve and ballot.
- Carefully insert the ballot into the scanner.



- The LCD screen will display a message that **your ballot has been cast successfully**.
- Your ballot will be safely deposited in the secure ballot box.
- Your voting session is now complete.

Make sure your vote counts

Look for the number of ovals to fill in for each contest.

Check the number of ovals you have filled in

If you fill in ovals for too many candidates in one contest, the scanner will display a message that you have an "Overvoted Ballot." You can press "Return Ballot" to get your ballot back and correct it, or you can ignore the message and cast your ballot with votes that will not count.

Check your ballot carefully – in some contests, the candidates are listed in two columns.

United States Senator Vote for one		
Party A A	Party A John Smith	
Party B B	Party B Jane Doe	Party E Mary Jones
Party C C	Party C John Smith	

Correct number of ovals filled in.
This vote will count for John Smith

United States Senator Vote for one		
Party A A	Party A John Smith	
Party B B	Party B Jane Doe	Party E Mary Jones
Party C C	Party C John Smith	

Too many ovals filled in.
These votes will not count

Do not vote more than once for the same candidate

In some contests, a candidate may be listed under more than one party. If you fill in more than one oval for a candidate in a contest, your vote will count for that candidate, but only under the party you selected listed first on the ballot.

United States Senator Vote for one	
Party A A	Party A John Smith
Party B B	Party B Jane Doe
Party C C	Party C John Smith

Correct number of ovals filled in.
This vote will count for John Smith under Party C

United States Senator Vote for one	
Party A A	Party A John Smith
Party B B	Party B Jane Doe
Party C C	Party C John Smith

Too many ovals filled in.
Your vote will count for John Smith under Party A, not under Party C.